



INSTALLATION  
OPERATION  
MAINTENANCE  
MANUAL  
FOR  
**MODEL LS400**  
LANDSCAPE TARPING SYSTEM

ATTENTION DISTRIBUTOR: DO NOT DISCARD.  
PLEASE GIVE THIS MANUAL TO THE CUSTOMER  
WHEN THE UNIT IS DELIVERED.

REVISED 05/07/2018

# LEGAL



**WARNING:** In order to prevent damage, the tarp must always be left in the uncovered position when the truck is not in use for a period of more than 2 consecutive hours.



**WARNING:** All repairs and parts replacement should be undertaken by qualified technicians. The buyer assumes all risks and liabilities arising out of his or her repairs, modifications, or parts replacement on the original product.



**WARNING:** Inspect the tarp system before each use for fit, wear and damage. Check tarp system at regular intervals during use. Replace parts at first sign of damage or material wear. If you find anything upon inspection that cannot be corrected, do not use as severe injury could result.



**WARNING:** Do not operate vehicle until you are certain that the tarp system is properly installed and can be safely operated.



**WARNING:** Do not operate the tarping system while the vehicle is in motion and make sure the vehicle is clear of any obstructions (such as overhead wires).



**CAUTION:** Any piece of equipment can be dangerous, even deadly, if not used properly. You are responsible for the proper use of this product and the safe operation of any accessories or related equipment and vehicles. Common sense and caution cannot be built into the equipment and must be supplied by the operator.



**CAUTION:** If for any reason you do not understand all portions of these instructions and warnings, contact the company at the number listed herein for assistance. Do not use, or allow others to use, the tarp system until you (and others) fully understand its operation, these instructions and warnings. Manufacturer assumes no liability or responsibility for injury or damage caused by improper use or failure to read and follow all instructions and warnings.

# LS400 SYSTEM INSTALLATION

## LS400

### TARPING SYSTEM

### INSTALLATION INSTRUCTIONS

Read and understand these instructions completely before beginning the installation. Use these instructions with the drawings included. Unpack, identify and familiarize yourself with the various components of the unit.



**REPLACE ALL WARNING LABELS WHEN THEY BECOME UNREADABLE. (ANSICD-1)**

Congratulations on your purchase of a Mountain Tarp LS400 Landscape tarping system. The Landscape Tarp economy system is our most affordable tarp system. It comes with an optional pull bar, mounts at the front of trailer or body with two end plates, and is simple and practical to operate.

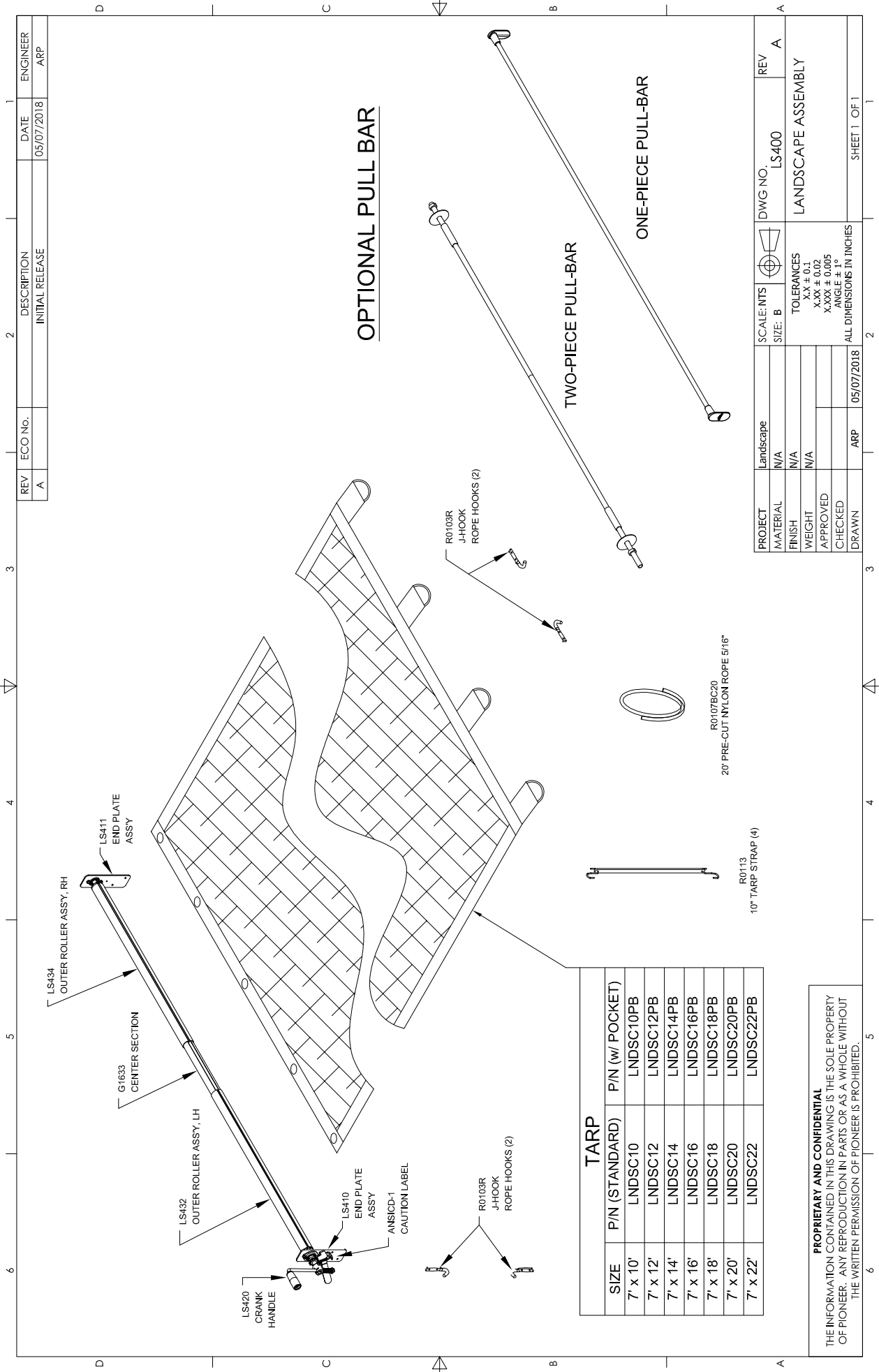
Ideal for hauling gravel, sand, and landscaping materials.

With tarping systems for dump bodies, transfer trailers, scrap trailers, landscaping trucks and roll-offs, Mountain Tarp offers the most complete line of tarping systems and parts in the industry.

**Note:** It is important that you inspect your trailer and prepare it for installation by removing any sharp edges or any thing that will cause damage to your tarp. For further technical assistance, contact our corporate headquarters at (800)-248-7717 or email us at [sales@mountaintarp.com](mailto:sales@mountaintarp.com).

For parts and service, visit us at one of our locations in Kentucky or Ohio, or contact one of our many dealers nationwide.

To learn more about Mountain Tarp and the products we offer, visit us online at [www.mountaintarp.com](http://www.mountaintarp.com).



**OPTIONAL PULL BAR**

**TWO-PIECE PULL-BAR**

**ONE-PIECE PULL-BAR**

TARP		
SIZE	P/N (STANDARD)	P/N (w/ POCKET)
7' x 10'	LNDSC10	LNDSC10PB
7' x 12'	LNDSC12	LNDSC12PB
7' x 14'	LNDSC14	LNDSC14PB
7' x 16'	LNDSC16	LNDSC16PB
7' x 18'	LNDSC18	LNDSC18PB
7' x 20'	LNDSC20	LNDSC20PB
7' x 22'	LNDSC22	LNDSC22PB

R0107BC20  
20' PRE-CUT NYLON ROPE 5/16"

R0113  
10" TARP STRAP (4)

PROJECT	Landscaping	SCALE: NTS	DWG NO.	REV
MATERIAL	N/A	SIZE: B	LS400	A
FINISH	N/A	TOLERANCES	LANDSCAPE ASSEMBLY	
WEIGHT	N/A	X.X ± 0.1		
APPROVED		X.XX ± 0.02		
CHECKED		X.XXX ± 0.005		
DRAWN	ARP	ANGLE ± 1°		
		ALL DIMENSIONS IN INCHES		

**PROPRIETARY AND CONFIDENTIAL**  
THE INFORMATION CONTAINED IN THIS DRAWING IS THE SOLE PROPERTY OF PIONEER. ANY REPRODUCTION IN PARTS OR AS A WHOLE WITHOUT THE WRITTEN PERMISSION OF PIONEER IS PROHIBITED.

# LS400 SYSTEM INSTALLATION

## STEP 1: INSTALLING TARP ROLLER ASSEMBLY

1A: Begin by determining the location you wish to mount the tarp roller. The Tarp Roller should typically be located on the dump body's cab guard, above the cab. To prevent damage whilst loading, the tarp roller should be mounted outside the dump body's loading area. Ensure that this location is accessible by the user for winding the tarp up.

1B: Clamp the LS410 & LS411 End Plate Assemblies to the dump body in the location determined in Step 1A. The End Plate Assembly with the detent lever (LS410) should be mounted on the driver's (left) side of the dump body. Ensure the brackets are aligned both vertically and front-to-back by measuring from a common point on each side of the body (figure 1).

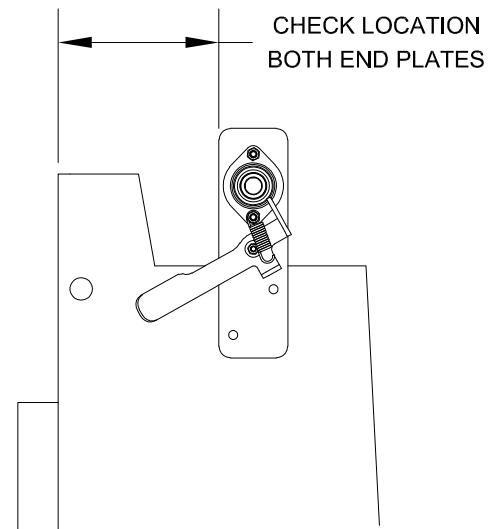


figure 1

1C: Mark the End Plate mounting hole locations on each side of the dump body. Remove the clamps and End Plates. Using a 13/32" drill bit, drill holes in the four marked locations on the dump body. Attach the End Plates to the dump body using the four supplied 3/8"-16 x 1" HHCS, 3/8" washers, and 3/8" locknuts. Do not fully tighten fasteners at this time, simply hand tighten to hold End Plates in position.

1D: Locate the center telescopic axle tube (G1633), and mark the center of the tube if it is not already indicated. Insert the center tube halfway into the driver's (left) Outer Tube Assembly (LS432), repeat this step for the passenger's (right) Outer Tube Assembly (LS434). Measure the distance between the inside of the mounted End Plates. Separate the axle tubes so the length of the complete axle tube assembly from end-to-end is 1/4" less than the distance between the mounting brackets. Locate the center mark on the center axle tube and ensure that the center tube is centered inside the outer axle tube assemblies. Screw each axle tube assembly to the inner axle tube using one 1/4" x 1" self-tapping screw, about 2" from the end of the outer tube.

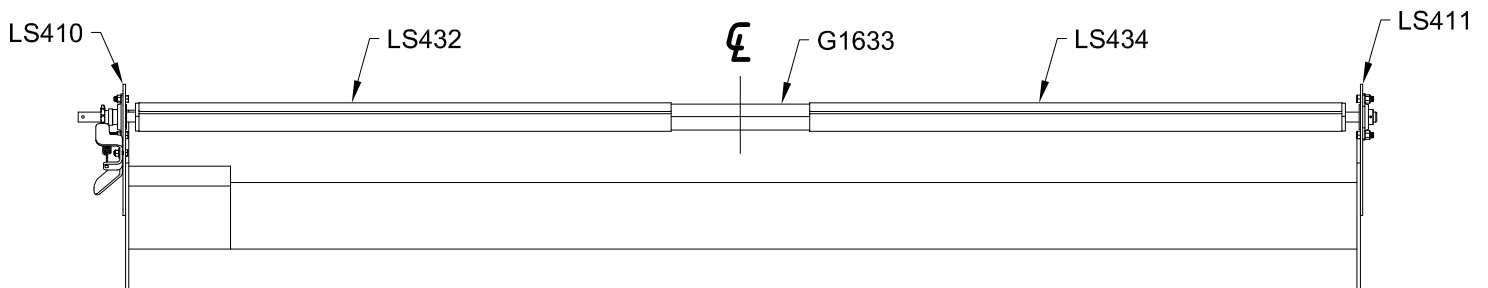


figure 2

# LS400 SYSTEM INSTALLATION

## STEP 2: INSTALLING THE TARP

2A: Slide the complete axle tube assembly onto the web in the end of the tarp. Verify that the webbing in the seams of the tarp will be on the bottom when installed (Note: the axle tube end of the tarp has only one row of webbing reinforcement). Center the axle tube assembly on the tarp. Hold the tarp onto the axle tube, and secure the tarp in place using five 1/4" x 1" self-tapping screws and fender washers. Ensure the screws are center in the tube along the groove in the extrusion, and the screws on each end are going through the tarp's webbing reinforcement.

2B: Remove one of the End Plate assemblies, and insert the 3/4" stub shaft of the Outer Roller assembly into the bearing of the mounted End Plate. Slide the removed End Plate over the shaft and reassemble to the dump body. The longer stub shaft should be inserted into the driver's (left) side End Plate. Tighten the 3/8" mounting fasteners to secure the End Plates to the dump body. Center the tarp axle assembly between the mounting brackets and tighten the set screws in each bearing race.

## STEP 3: INSTALLING THE CRANK HANDLE ASSEMBLY

3A: Place sprocket (K013110) onto the 3/4" shaft of the driver's (left) side axle tube assembly. With the detent lever in the open position, slide the sprocket down the shaft until it is tight against the bearing. Tighten set screws to secure sprocket.

3B: Mount the crank handle assembly (LS420) onto the driver's (left) side axle tube shaft and fasten using supplied 5/16" x 2.00" HHCS and 5/16" Locknut.

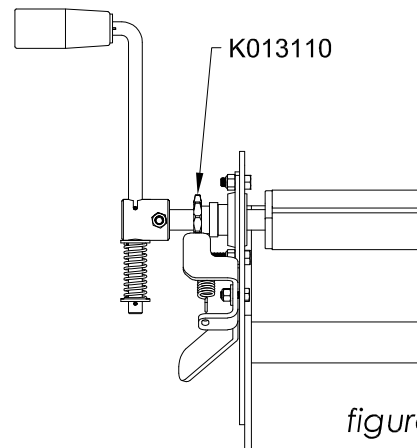


figure 3

## STEP 4: INSTALLING THE ROPE AND HOOKS

4A: Attach the eight S-Hooks to the four tarp straps (R0113), if they are not already attached. The small end of the s-hook is inserted into the hole in the strap and should be bent around the strap to permanently attach the hook to the strap. The four strap assemblies should be attached to the D-rings in the rear of the tarp. The large hooks should be bent around the D-rings to permanently attach the straps to the tarp.

4B: Attach the pull rope assembly to the center grommet on the rear of the tarp. Attach two rope storage J-hooks to the dump body tailgate to wrap the pull rope for storage when the tarp is covering the body. The hooks should be mounted horizontally and may be bolted using provided self-tapping screws, or welded to the dump body. The recommended distance between the J-hooks is 15-17".

# LS400 SYSTEM INSTALLATION

4C: Attach two rope storage J-hooks to the side of the dump body near the crank handle assembly to wrap the pull rope for storage when the tarp is retracted. The hooks should be mounted vertically and may be bolted using provided self-tapping screws, or welded to the dump body.

## STEP 4: INSTALLING THE REAR SECTION / PULL BAR (OPTIONAL)

### 4A: TWO-PIECE REAR SECTION

Assemble the two piece rear section by screwing the threaded end of one piece into the coupling on the other piece. Tighten securely with pipe wrenches. Slide the Rear Section into the pocket at the rear of the tarp and center the bar in the tarp. The same amount of bar should be exposed on each side of the tarp.

**NOTE: This Rear Section may have to be cut. Its length should be 4-6" longer than the dump body width at its widest point.**

Measure the top outside width of the body and cut the PVC roller tube so the length of the two pieces together is equal to this measurement less the coupling. Slide the Roller Tube over the Rear Section so the two halves butt up to the coupling in the center. Attach the Collars and Washers to the Rear section and shown in *figure 4*.

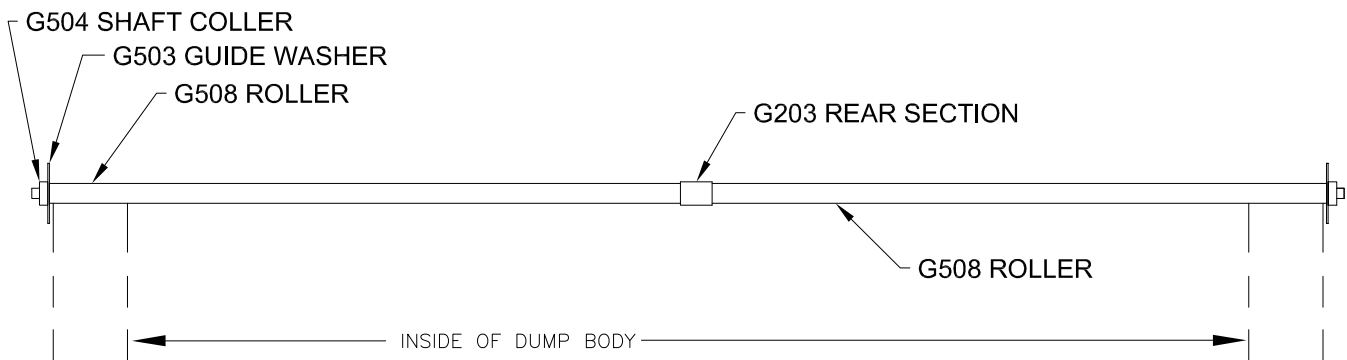


figure 4

### 4B: ONE-PIECE PULL BAR

Slide the Pull Bar into the pocket at the rear of the tarp and center the bar in the tarp. The same amount of bar should be exposed on each side of the tarp. Assemble the PVC rollers onto the bar, and cap the ends using the cast Pull Bar Caps. Tighten set screws in the caps to secure it in place.

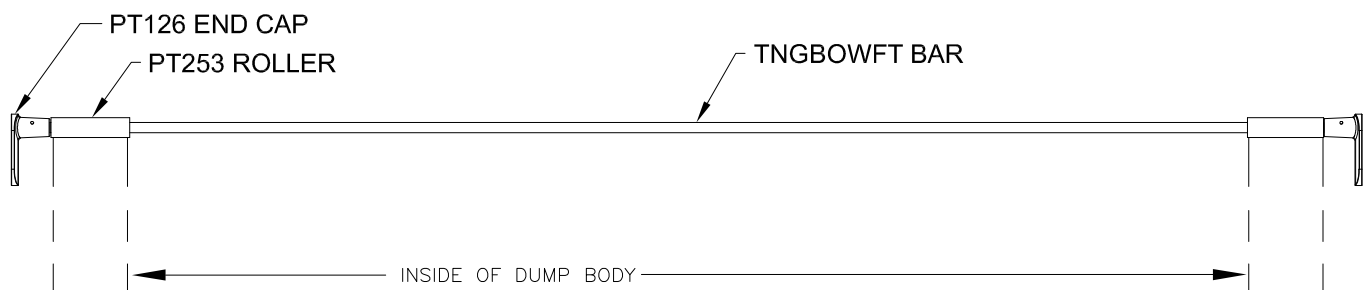


figure 5

## OUR LOCATIONS

<b>Headquarters</b> Middlesboro, KY  PO Box 186 1002 N. 15th St. Middlesboro, KY 40965 800-248-7717	Louisa, KY  225 Fallsburg Rd. Louisa, KY 41230 606-686-2117	Sharonville, OH  2580 E. Sharon Rd. Sharonville, OH 45241 513-422-7737	Ravenna, OH  4442 State Rt. 14 Ravenna, OH 44266 330-325-7722	Houston, TX  12245 FM 529 Rd. Houston, TX 77041 888-618-8277	N. Oxford, MA  10 Boulder Pkwy N. Oxford, MA 01537 508-731-0164
---	---	--	---	--	---

## WARRANTY

Mountain Tarp warrants this system for a period of twelve (12) months, against proven defective parts and workmanship. Excluded from this warranty is the fabric tarp. Our liability is limited to the replacement parts and does not include freight, labor or lost time due to or in connection with the failure of the parts. Any part will be replaced under the conditions of this warranty when Mountain Tarp has authorized a return and has received satisfactory evidence that the part(s) is(are) defective.